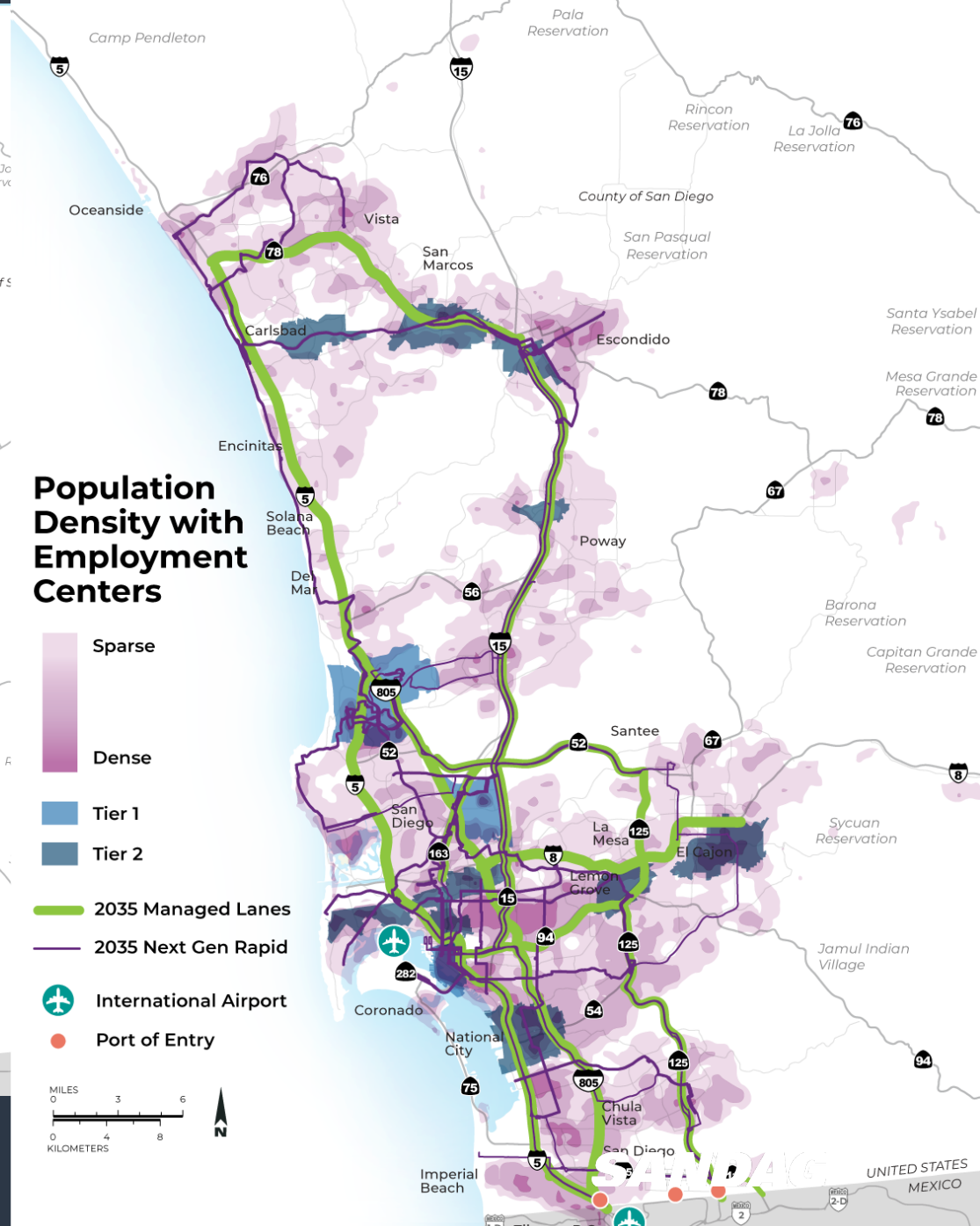


**Joint Informational Hearing
March 10, 2021**

**Assembly
Transportation
Committee**

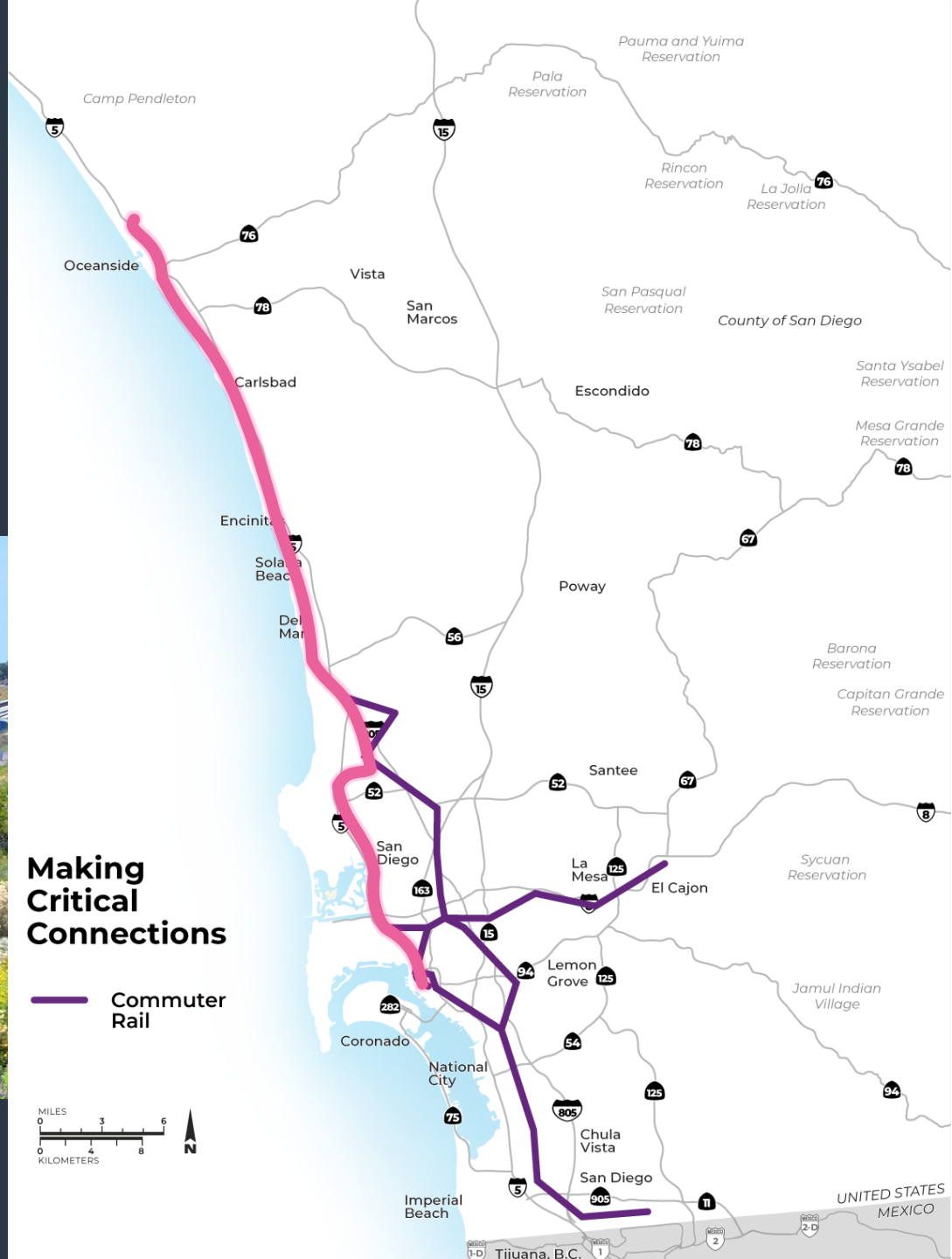
Subcommittee No. 3

Regionwide Transit Access



Transit Leap

High Speed - High Frequency - High Capacity



More than \$660 million worth of critical improvements that are **SHOVEL READY!**



Eastbrook to Shell Double Track



Batiquitos Lagoon Double Track



San Dieguito Double Track and Special Events Platform



Sorrento to Miramar Double Track Phase 2



Del Mar Bluffs







Land Use and Housing





Central Mobility Hub



SUNFLINER

SUNFLINER

To Airport
Exit to Pacific Highway
Elevators
AMTRAK SUNFLINER
To Other Platforms
Trolley - Green Line
Trolley - Blue Line
COASTER
Buses
Rideshare

SUNFLINER
To Santa Fe Depot

COFFEE BREAK

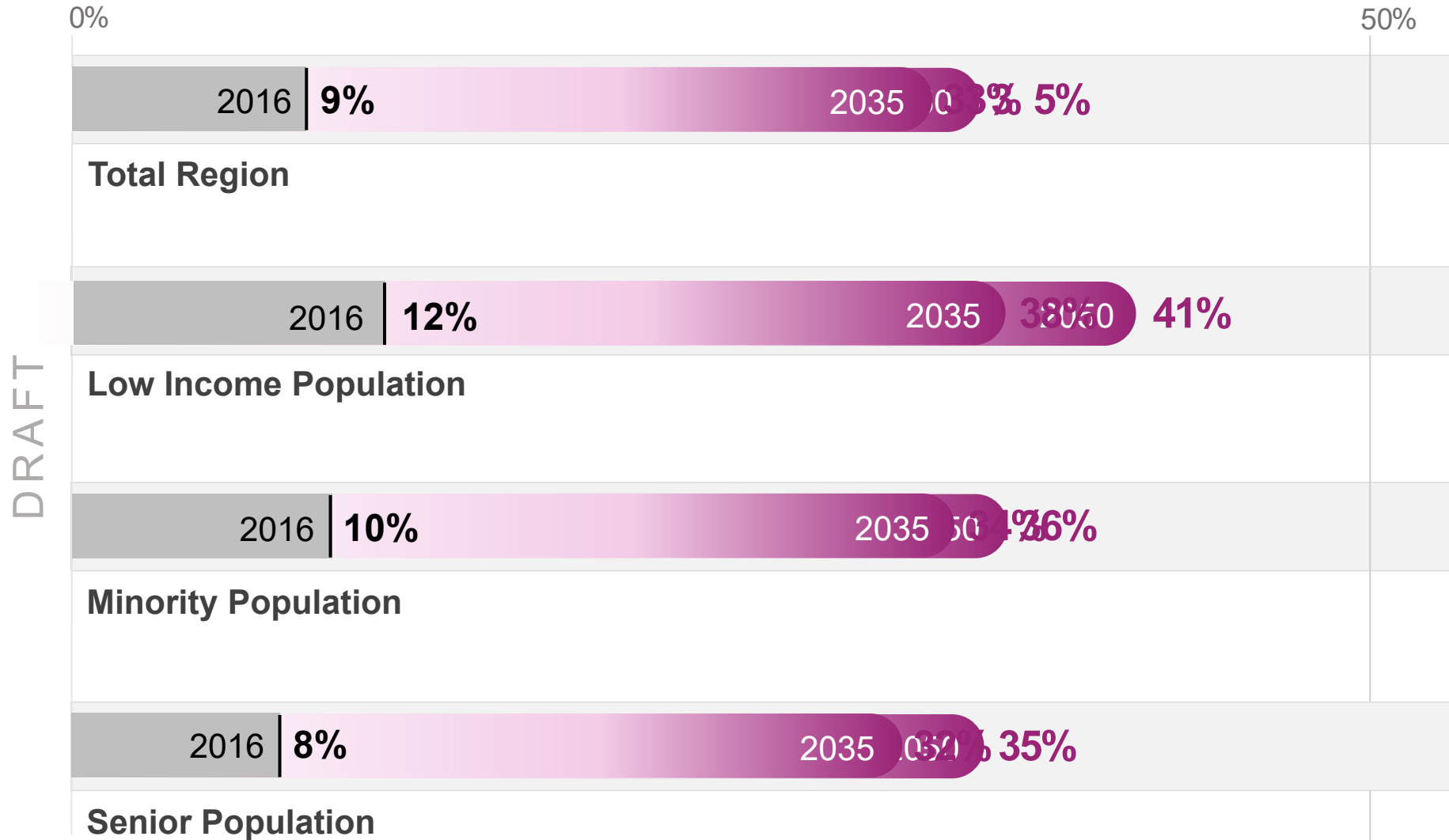
COFFEE BREAK

ARRIVAL ON TIME
ARRIVAL ON TIME
ARRIVAL ON TIME

SUNFLINER
To Santa Fe Depot

Transit Access for Social Equity

within 0.5 miles of commuter rail, light rail, or *Rapid* transit stop





Building Today. Boarding Tomorrow.

Investing in California's busiest passenger rail corridor.